



Spatial tools for conservation planning in remote spaces: end of project workshop



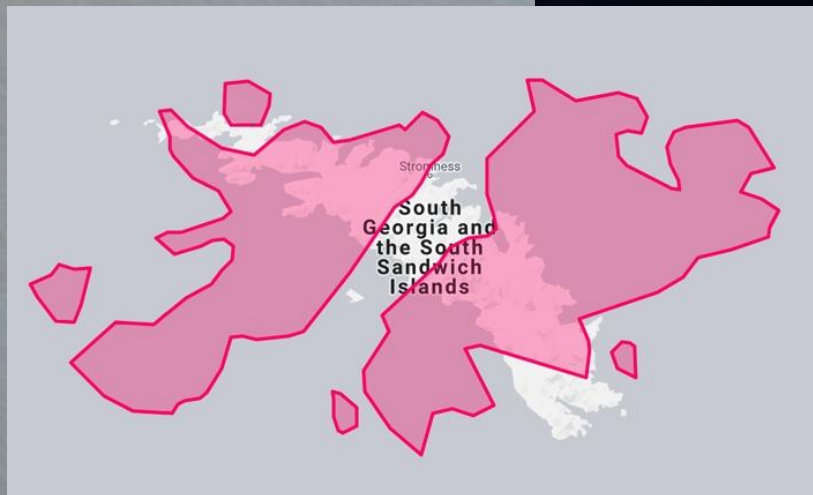
Why is coastal habitat mapping so important for us?

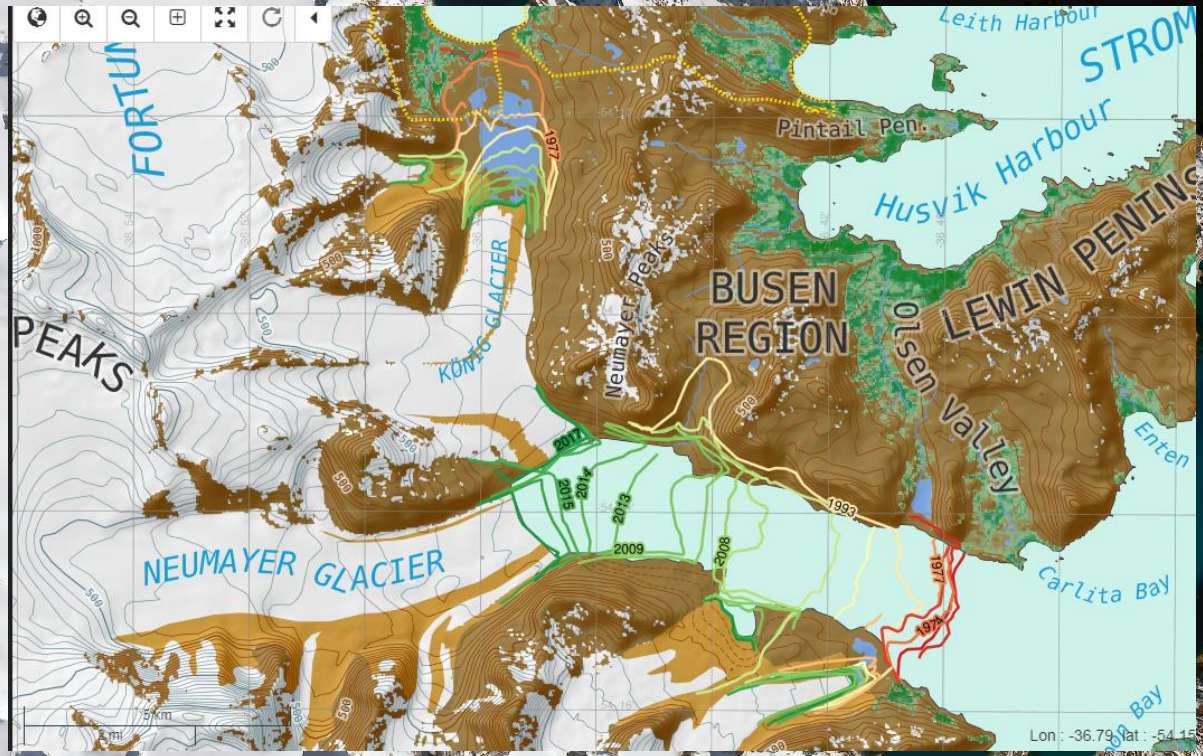
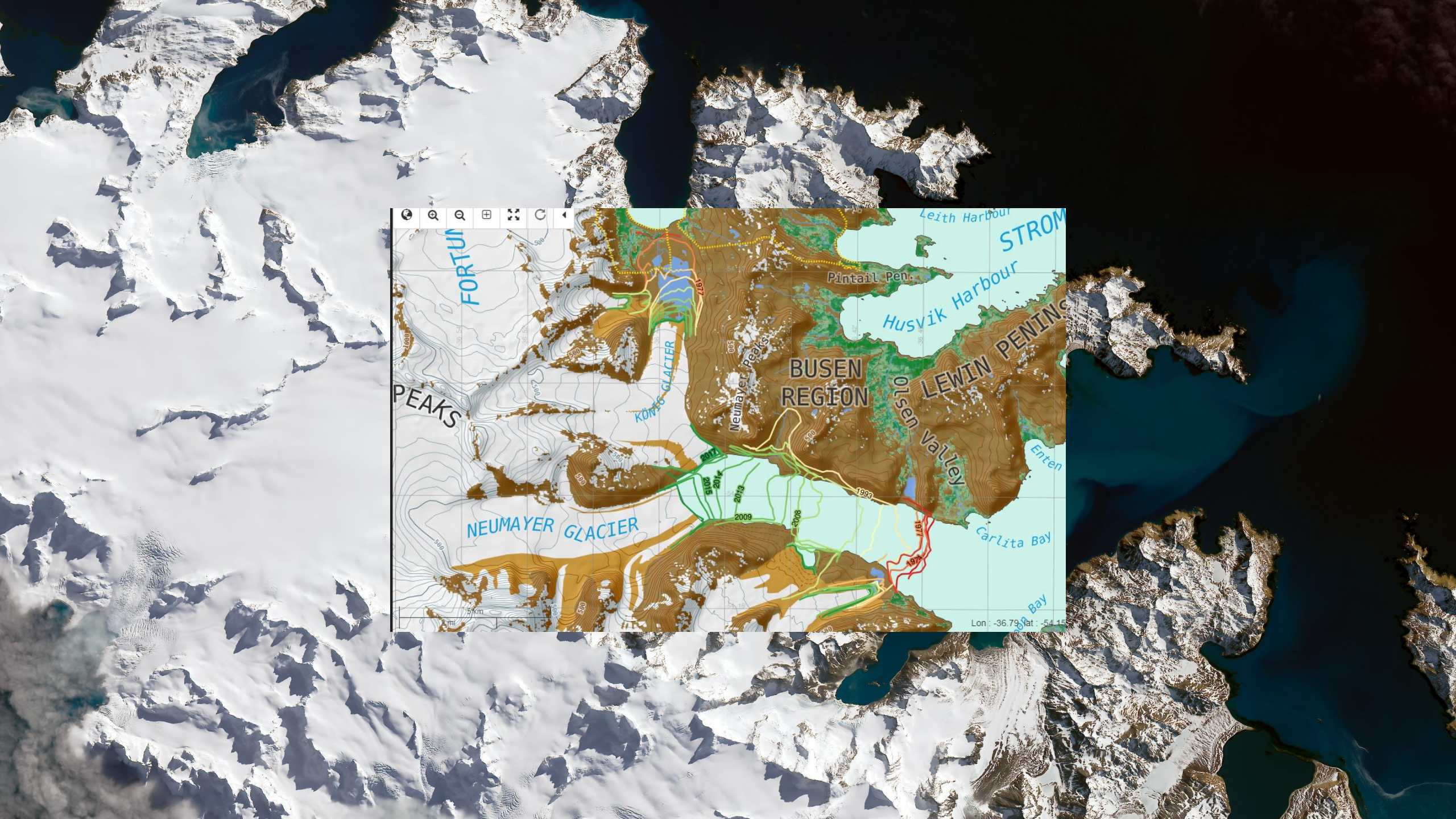
A South Georgia perspective

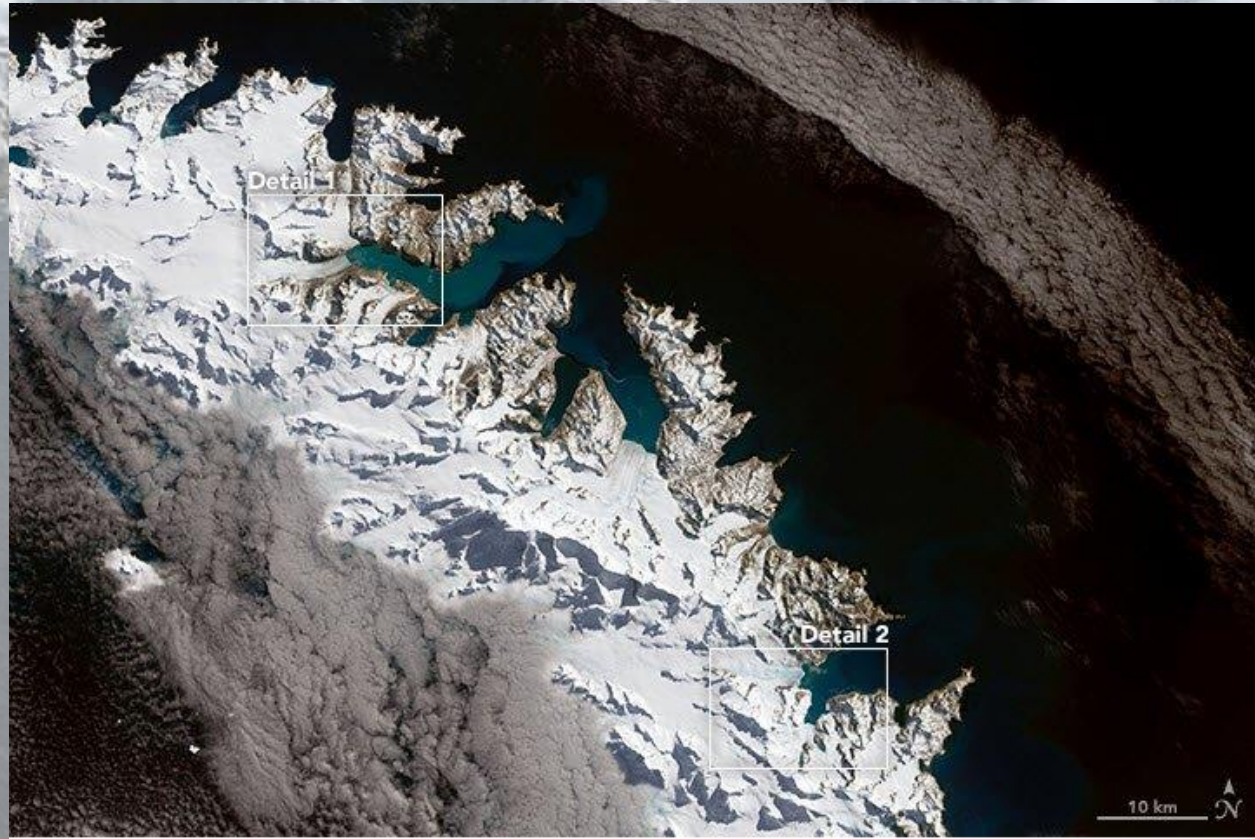
Mark Belchier, GSGSSI

Produced as part of the Darwin DPLUS065 Coastal Habitat Mapping project















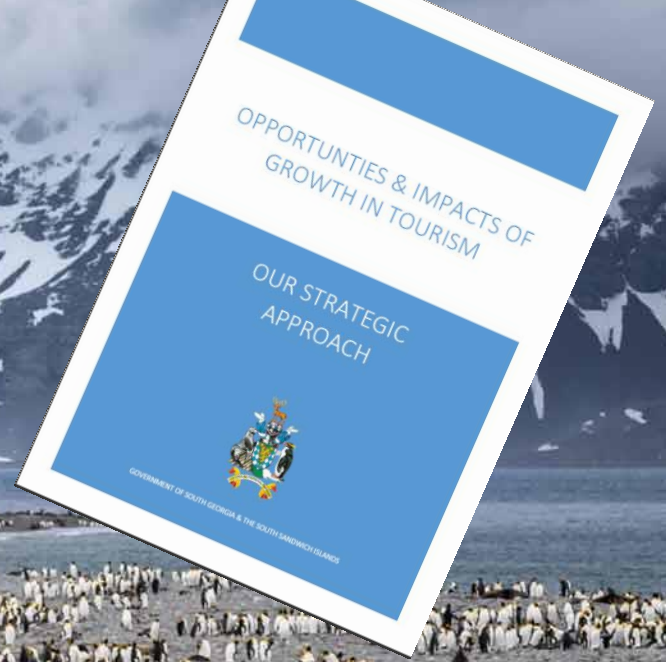
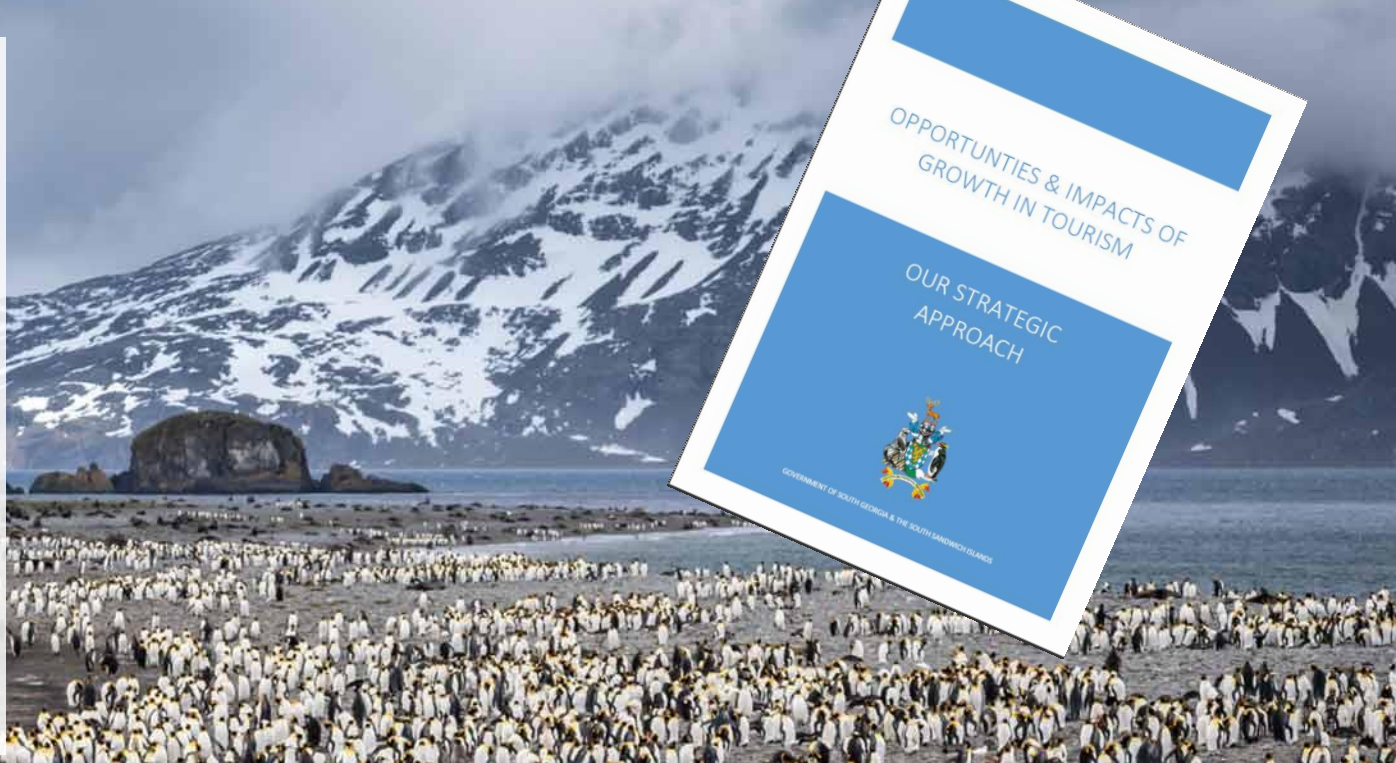
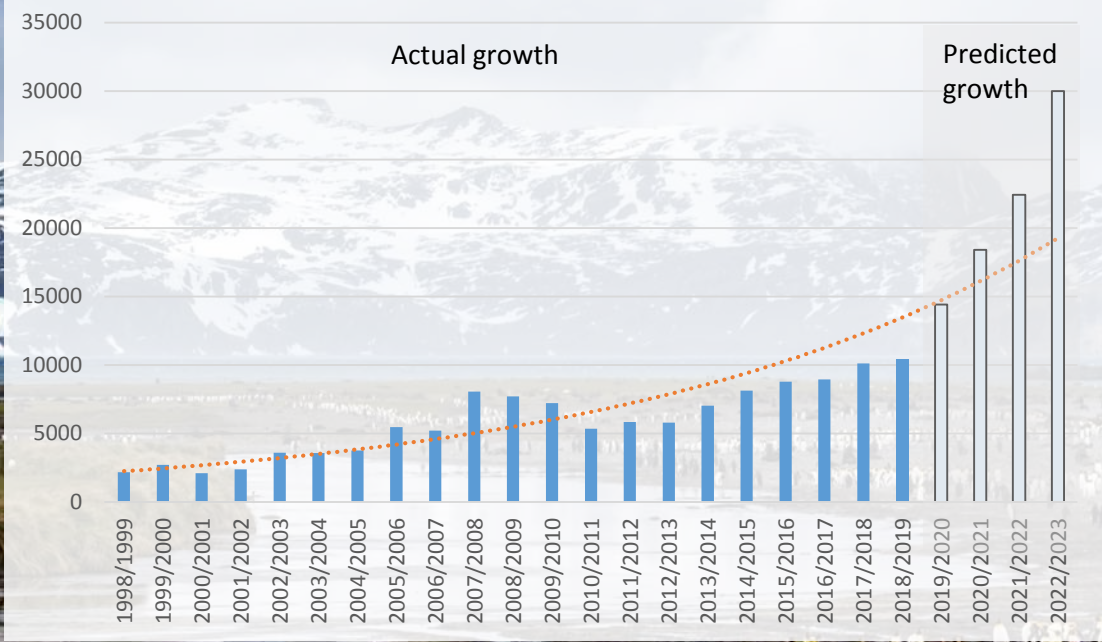
© 2015 Andy Black



nature picture library

01602671 © Tony Heald / naturepl.com

Passenger Number Trends South Georgia



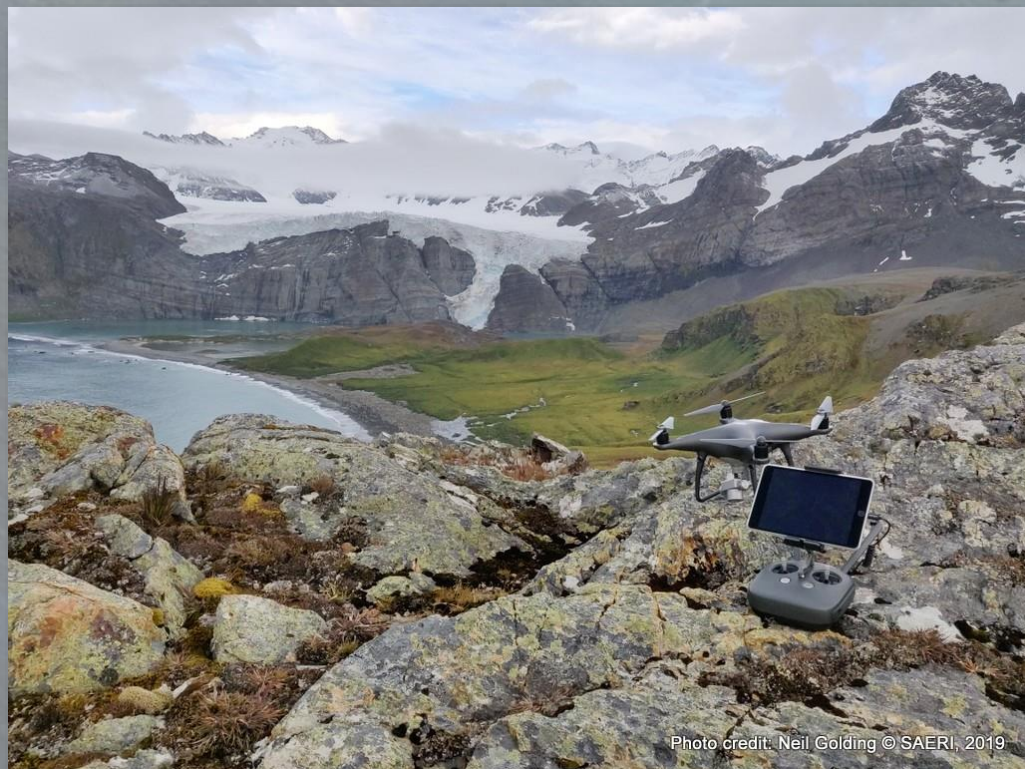


Photo credit: Neil Golding © SAERI, 2019



© GSCSSI / www.geometria.co.nz



Spatial tools for conservation planning in remote spaces: end of project workshop



Any questions?

