



Spatial tools for conservation planning in remote spaces: end of project workshop

Future collaborative opportunities in the UKOTs

Dr Paul Brickle

SAERI Executive Director



#SouthAtlanticCoastalMapping



DPLUS065 Coastal Mapping Project – Grant aided by the Darwin Initiative through UK Government funding & supported by the FIG Environmental Studies Budget

Satellite image courtesy of Digital Globe Foundation



Structure

- Brief overview of SAERI's wider remit
- Setting the scene for the discussion this afternoon
- Overview of coastal mapping project-generated opportunities
- Initial ideas for new opportunities for collaboration
- Network of research institutes.

Vision



SAERI'S VISION

To deliver world-class environmental research from the Falkland Islands that informs the effective stewardship of our planet.



SAERI'S MISSION

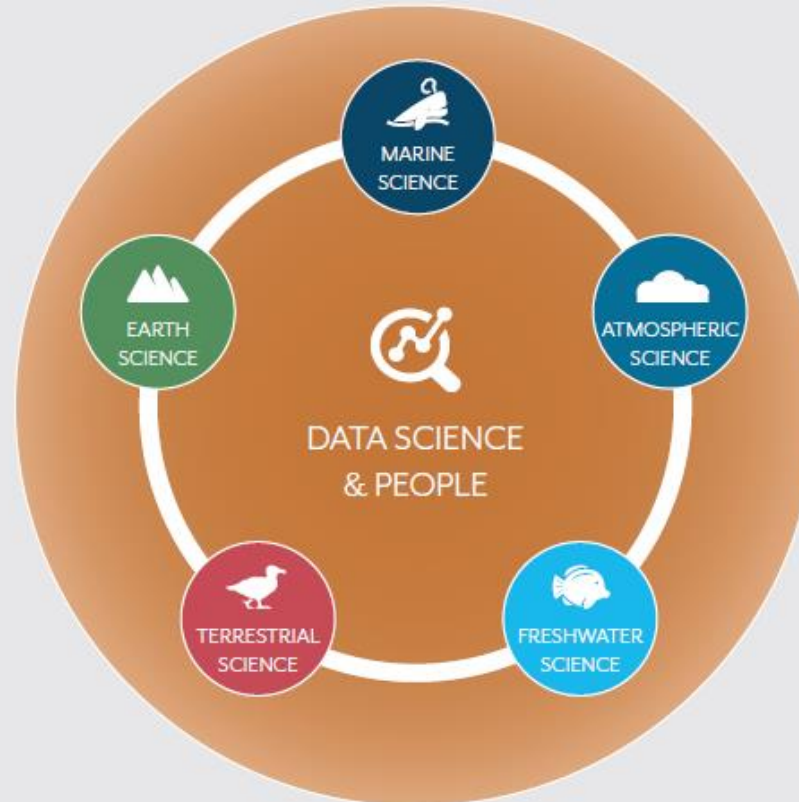
SAERI advances environmental understanding in the territories and countries in which it operates through partnerships, Research Institutes and Centres to deliver research excellence and innovative science leadership. We use our unique expertise to share, communicate and apply our skills and findings and find innovative solutions to common environmental challenges.

Focal areas



OUR STRATEGY

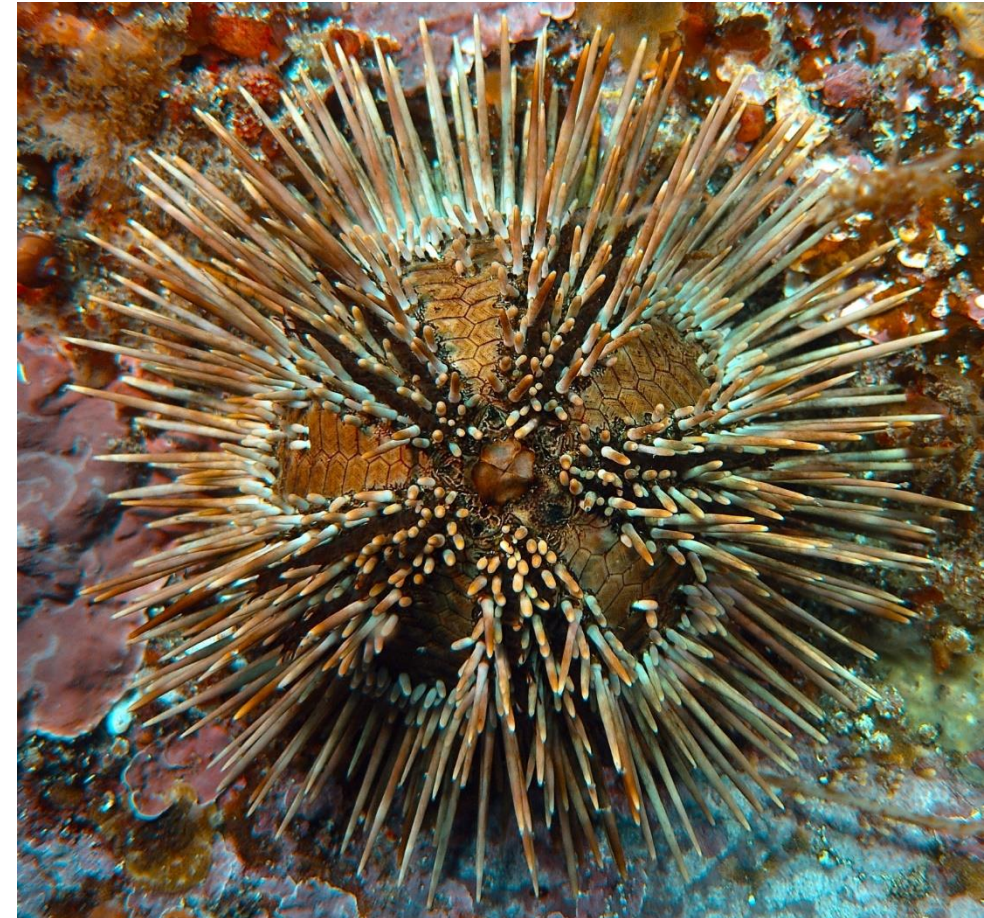
SAERI will operate within 5 Focal Areas of science, with its people and data science cross cutting all areas.

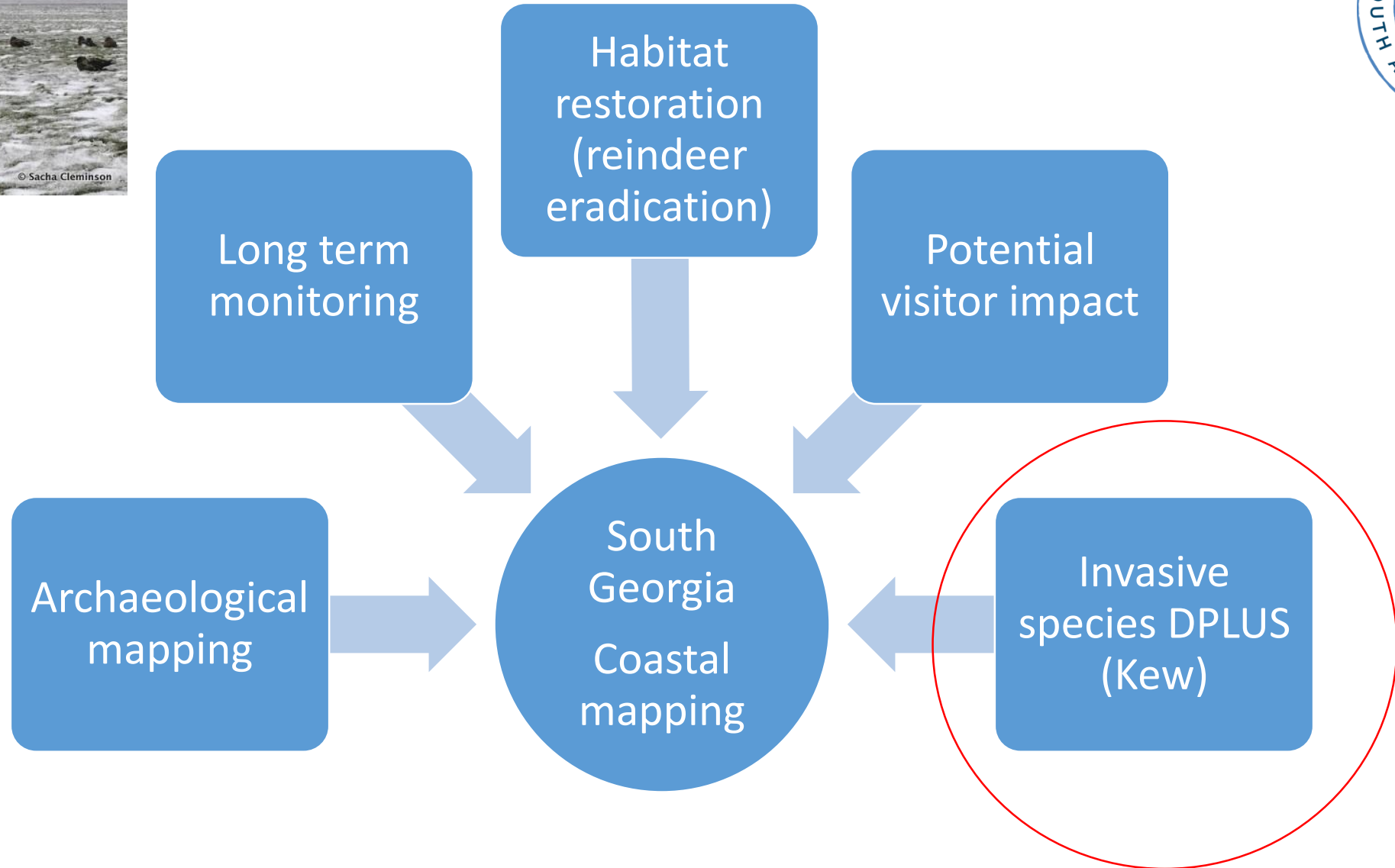


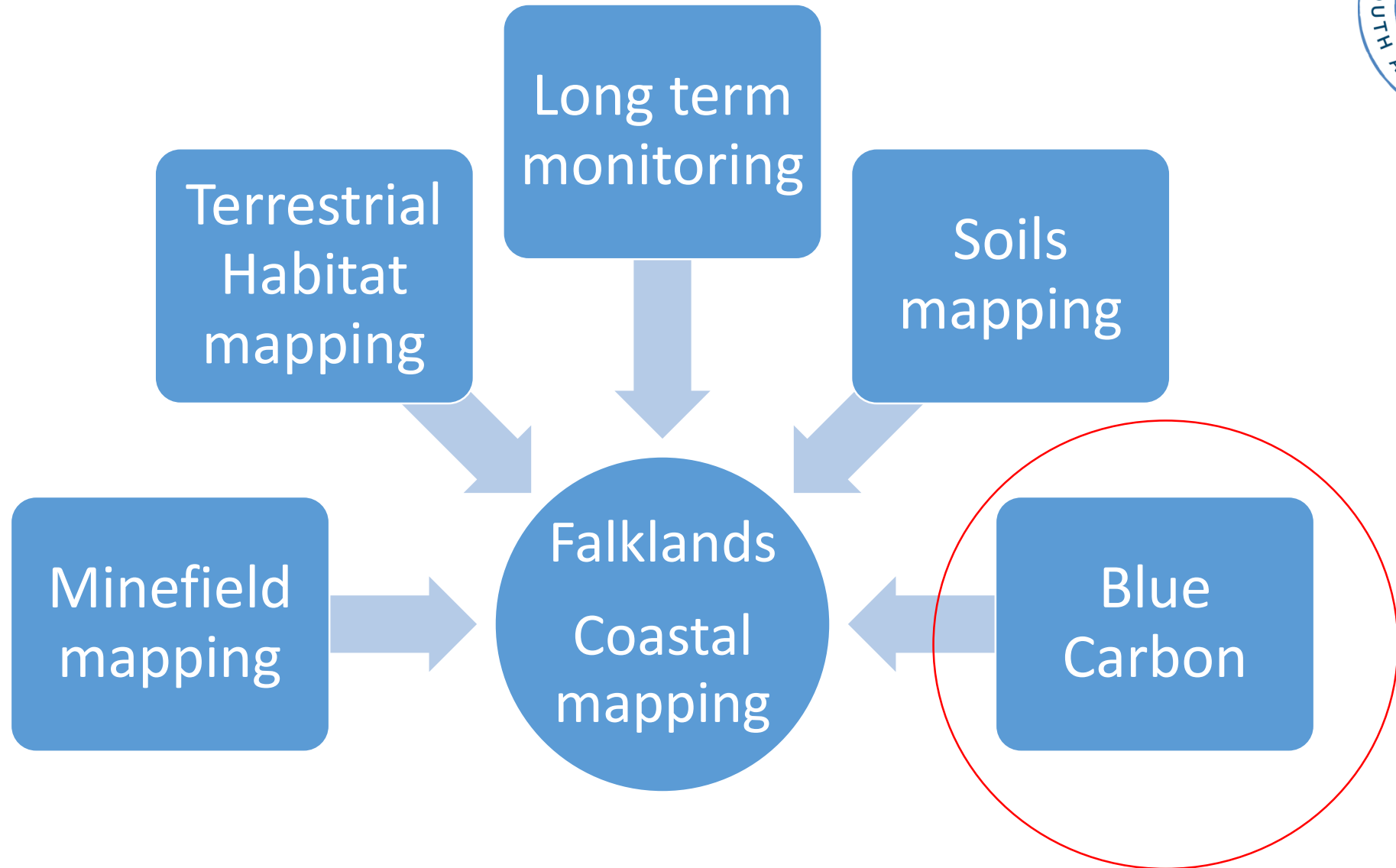


Setting the scene

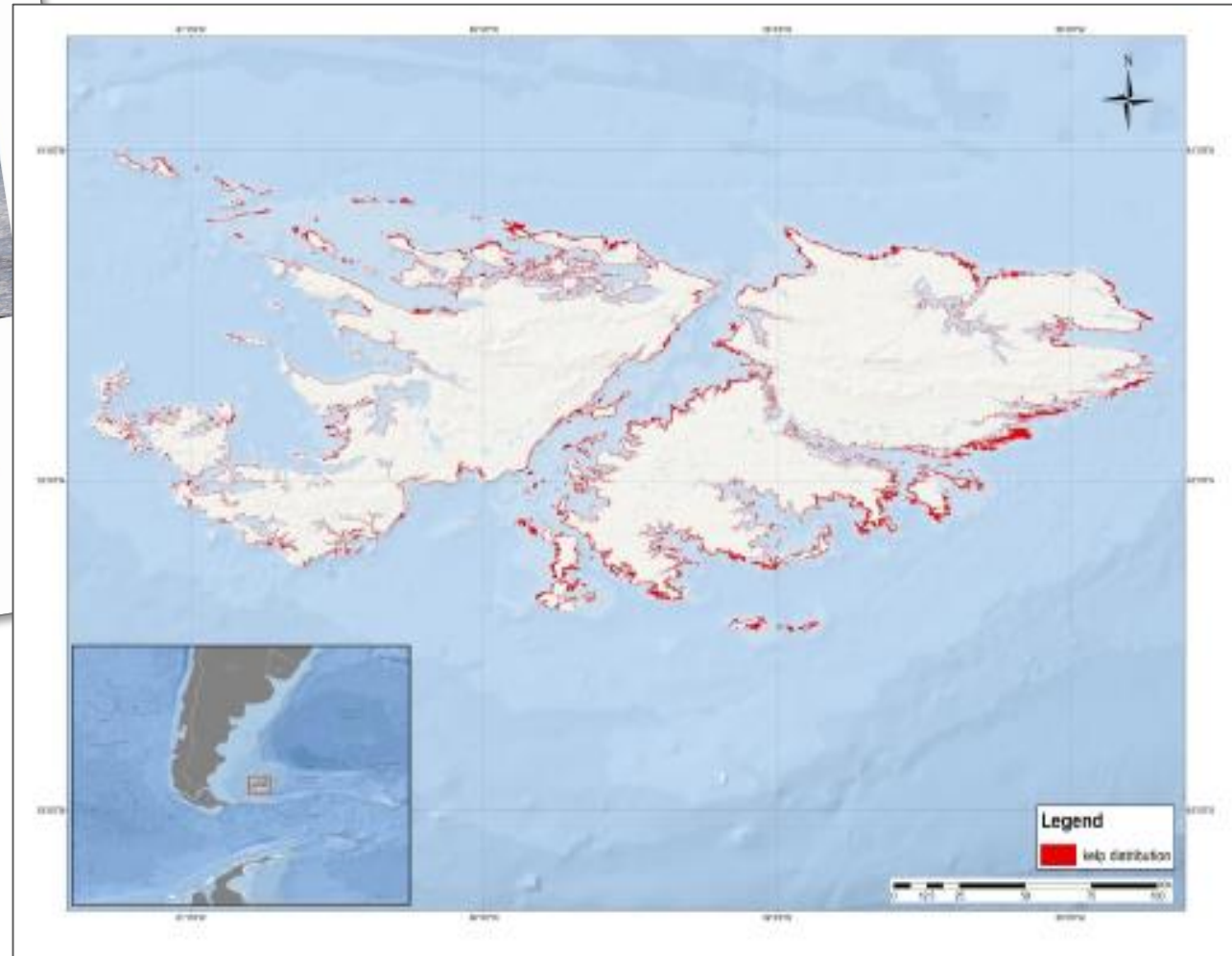
- A number of collaborations developed during the DPLUS065 Coastal mapping
- In addition a number of other projects
- Explore opportunities to build on all of the good work been done
- Ethos
 - Ideas developed collaboratively, implemented collaboratively
 - Encourage multi-disciplinary working
 - Territory-based organisations integral part of projects.

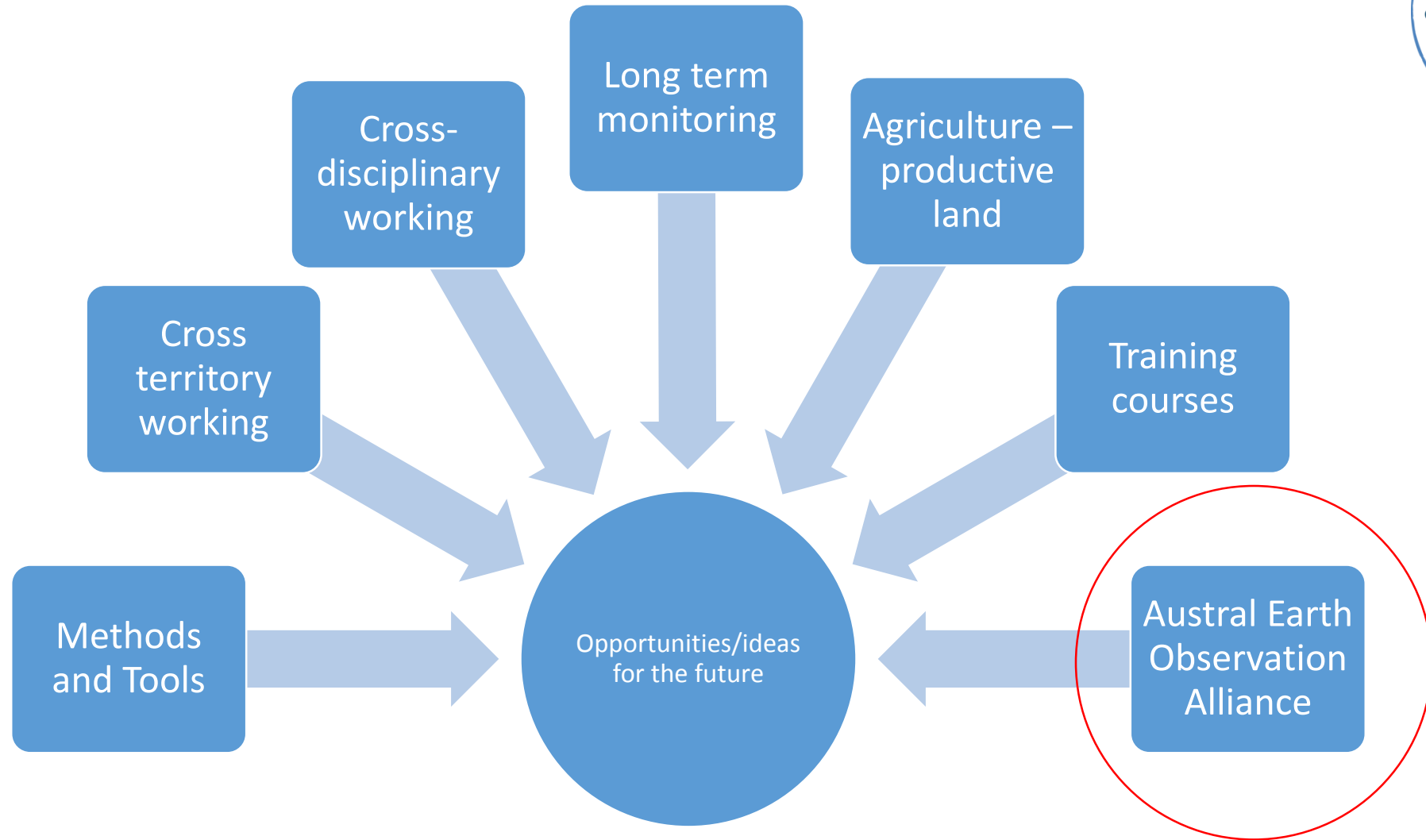






Blue carbon value for kelp





South Atlantic Environmental Research Institute



Austral Earth Observation Alliance

Providing innovative solutions for environmental sustainability

Earth Observation (EO) is the collection of information about the earth's surface (including aquatic environments) using remote sensing tools, e.g. satellite imagery, aerial photography, drone footage, radars, sonars. Through the generation of products (e.g. maps, data visualisation), Earth Observation data can then be used to measure and monitor different features of the environment over time, which can feed into management and decision-making processes from the regional to local scale. EO data has the potential to reduce long-term costs and can be used as a tool to bridge the gaps between science and decision-making.

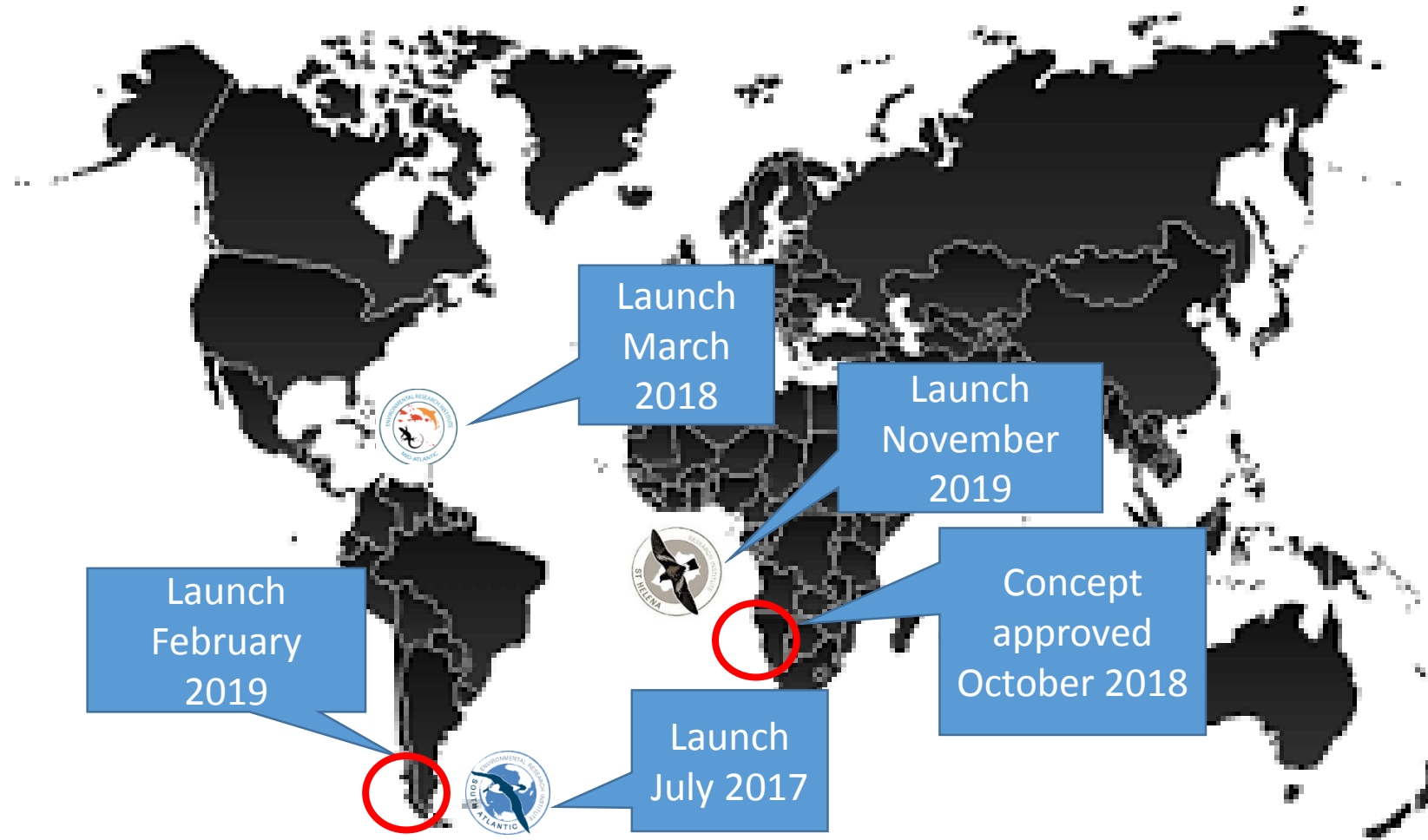
The South Atlantic Environmental Research Institute (SAERI), together with its partners: the Joint Nature Conservation Committee, the Universidad de Magallanes (UMAG); Universidad Santo Tomás (Santiago), Universidad de Chile and the University of Dundee, is developing a virtual centre of excellence to bring together providers and users of EO enabling them to work together on common problems to exploit EO in the South Atlantic and South American region. The Centre will include researchers, government bodies, NGOs, and the private sector.



- [Earth Observation Centre of Excellence](#)
- [EO in the South Atlantic, and beyond!](#)
- [Earth observation Centre of Excellence: turning Earth data into information](#)



Research institutes and Centres of excellence



Next steps

- These are just initial ideas
- Look forward to discussing your ideas
- Future collaborations
- Tangible outputs – start of project concepts – day 2.





Spatial tools for conservation planning in remote spaces: end of project workshop



Any questions?

