

South Georgia Heritage Trust



South Georgia Heritage Trust – Protecting the past and future of South Georgia

www.sght.org

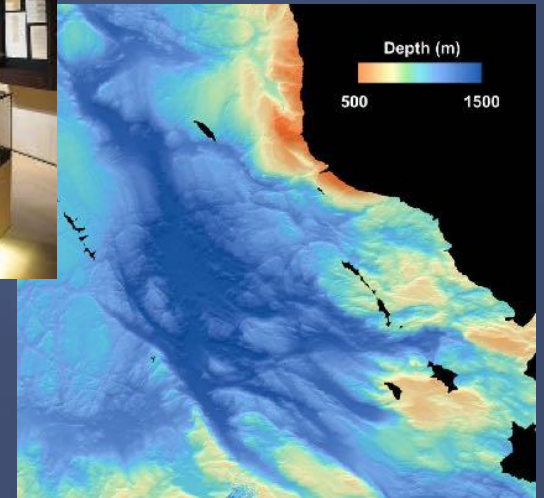
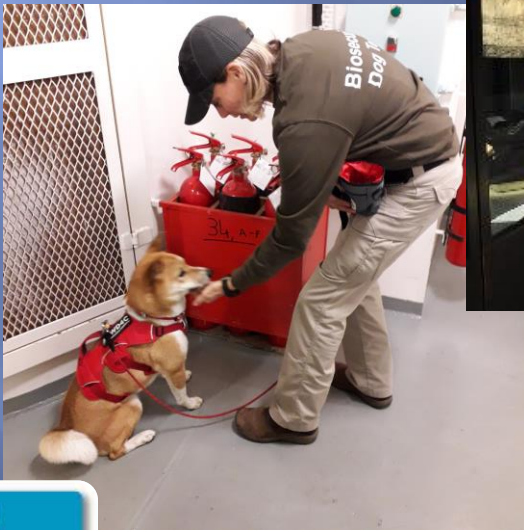
The South Georgia Heritage Trust (SGHT)



Environmental monitoring work



Outreach, education, funding



South Georgia Island Live App

The screenshot displays a satellite-style map of South Georgia Island. The map is overlaid with various markers and labels. A legend in the top right corner identifies the following features:

- Whaling Stations
- Albatross Locations (marked with green triangles)
- Elephant Seals
- Penguins
- Pipits
- Shackleton's Route
- Shackleton's Route (3D)
- Neumayer Glacier
- Grytviken (detailed)

Geographical labels on the map include: FORTUNA GLACIER, ESMARK GLACIER, ROSSI PENINSULA, NEUMAYER GLACIER, THATCHER PENINSULA, BARFF PENINSULA, SOUTH GEORGIA, CHRISTOPHERSEN GLACIER, SAUVESSE GLACIER, and CUMBERLAND BAY. A pop-up window titled "Annenkov Island" is centered on the map, featuring a photograph of a wandering albatross. Below the photo, the text reads: "J. J. Harrison, CC BY-SA 3.0" and "Wandering albatross". A "Read more..." link is visible at the bottom of the pop-up. The bottom left corner of the app interface shows the coordinates "54° 07' 13" S 36° 08' 48" W" and a zoom level of "8".



Future opportunities to assist with coastal mapping work?

