

Marine Spatial Planning

Amélie Augé
SAERI



Marine Spatial Planning: What is it?

Land use planning..... for the sea

Farmers were first!





Marine Spatial Planning: What is it?

Land use planning..... for the sea



- 1. Scope and explore the area**
- 2. Identify its values and map them**
- 3. Draw the vision of what people want it to look like**
- 4. Determine what areas are most appropriate for different activities to ensure the sea thrives in the future**

Marine Spatial Planning: What is it?

Land use planning..... for the sea

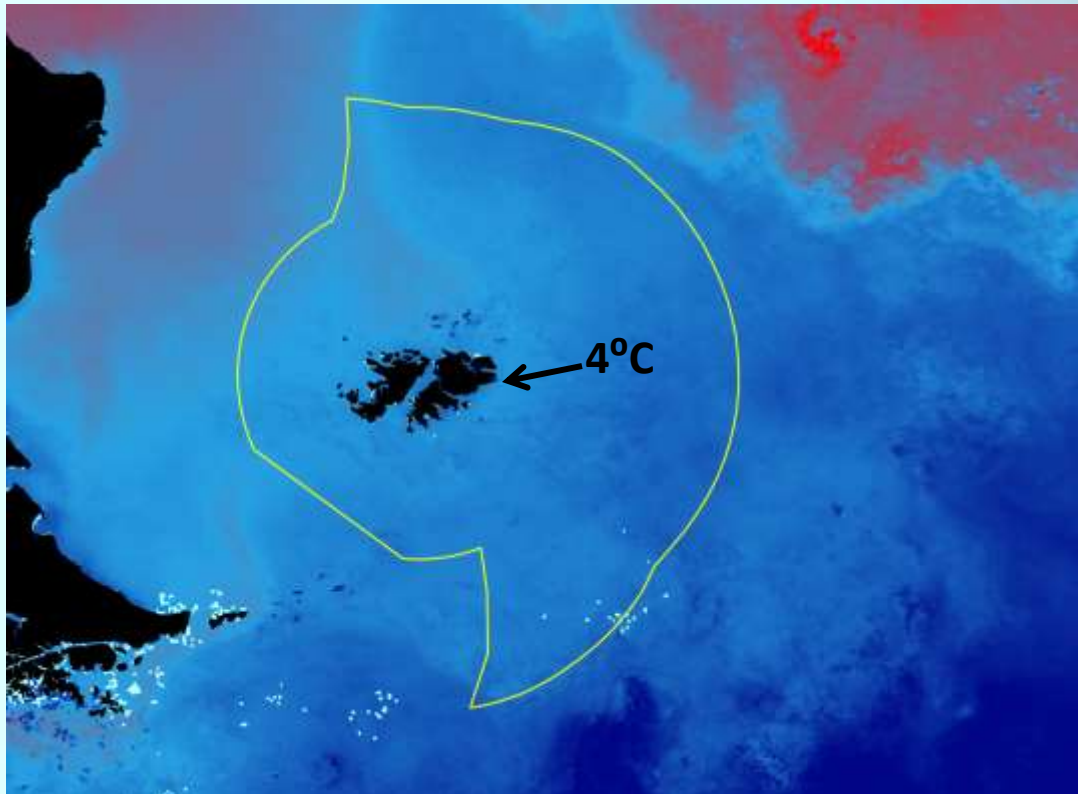


- 1. Scope and explore the area**
2. Identify its values and map them
3. Draw the vision of what people want it to look like
4. Determine what areas are most appropriate for different activities to ensure the sea thrives in the future

Marine Spatial Planning: What is it?

Land use planning..... for the sea

Sea surface temperature

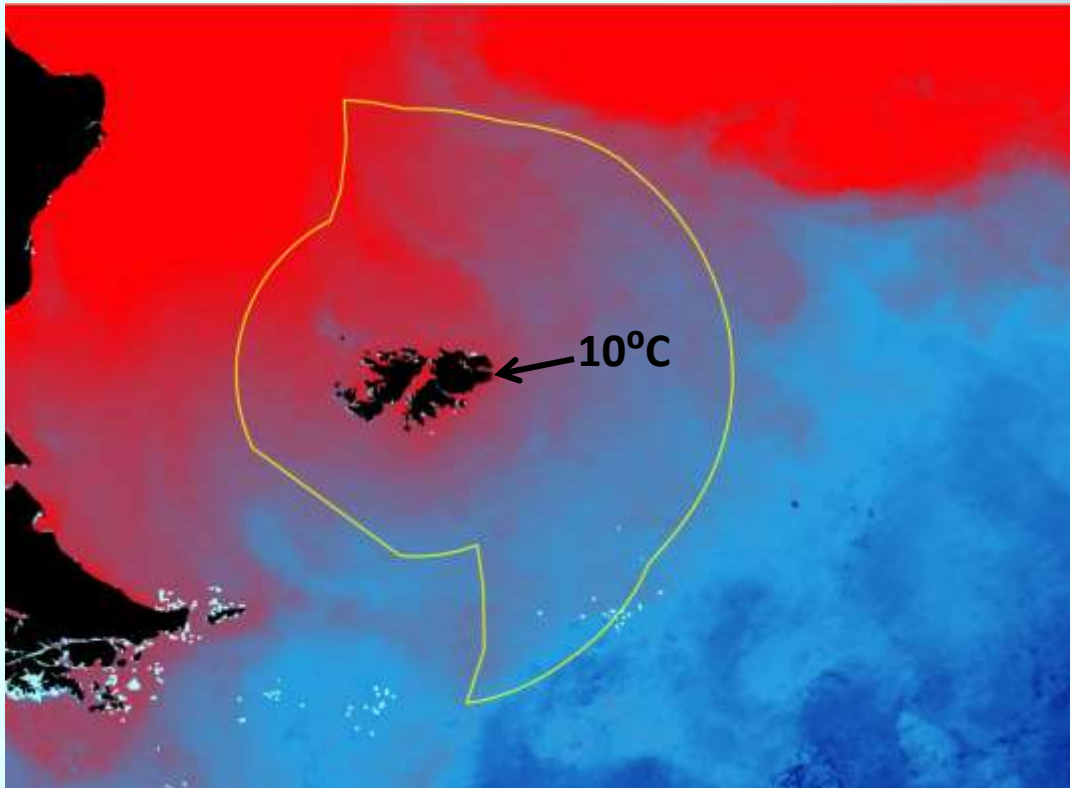


1. **Scope and explore the area**
2. Identify its values and map them
3. Draw the vision of what people want it to look like
4. Determine what areas are most appropriate for different activities to ensure the sea thrives in the future

Marine Spatial Planning: What is it?

Land use planning..... for the sea

Sea surface temperature



1. **Scope and explore the area**
2. Identify its values and map them
3. Draw the vision of what people want it to look like
4. Determine what areas are most appropriate for different activities to ensure the sea thrives in the future



Marine Spatial Planning: What is it?

Land use planning..... for the sea

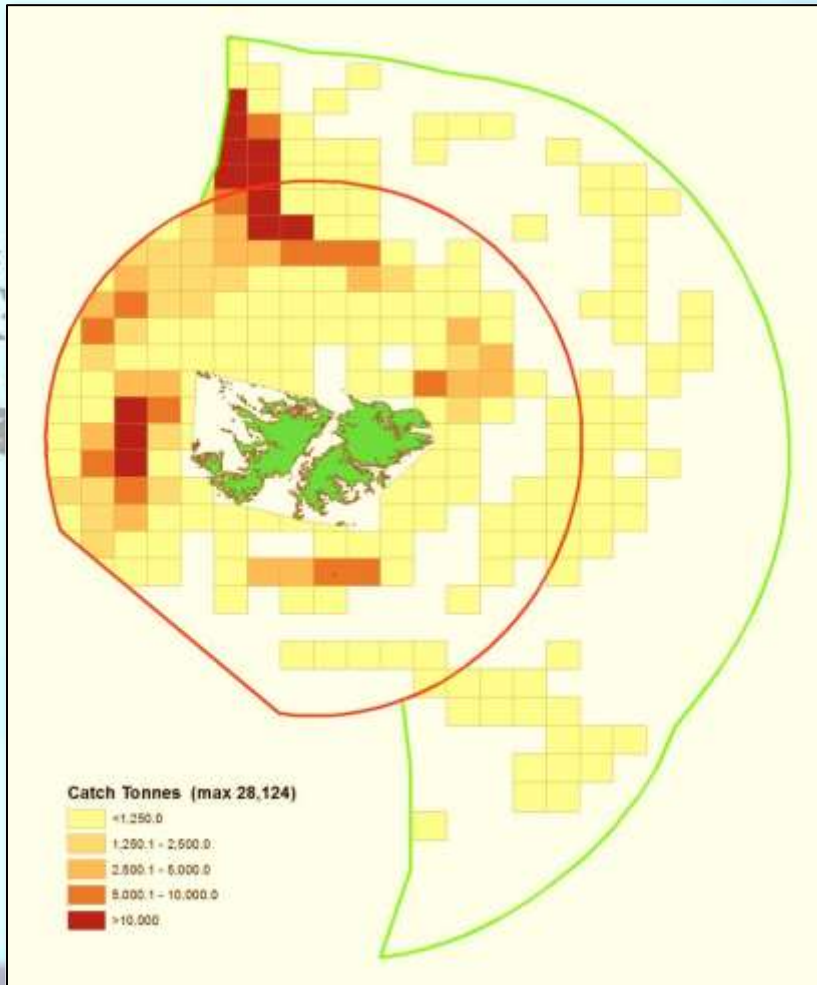


1. Scope and explore the area
2. Identify its values and map them
3. Draw the vision of what people want it to look like
4. Determine what areas are most appropriate for different activities to ensure the sea thrives in the future

Marine Spatial Planning: What is it?

Land use planning..... for the sea

Fishing grounds

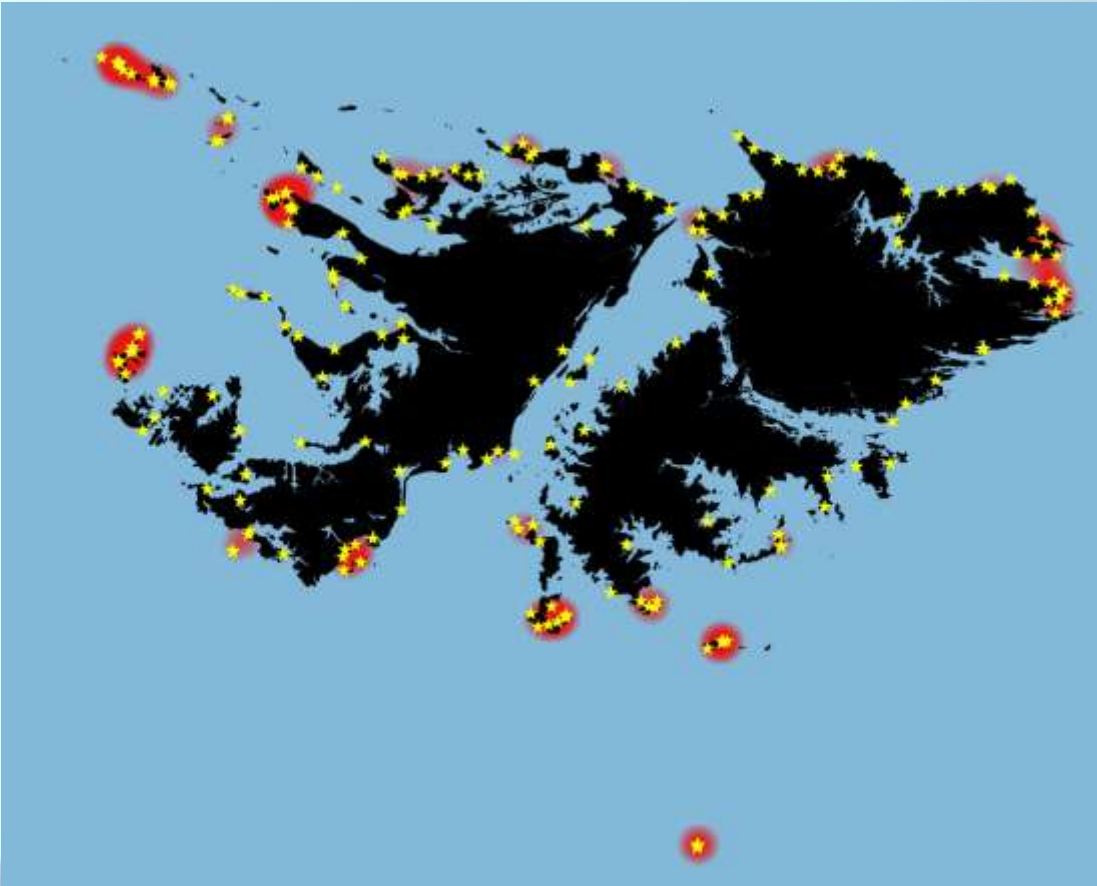


1. Scope and explore the area
2. Identify its values and map them
3. Draw the vision of what people want it to look like
4. Determine what areas are most appropriate for different activities to ensure the sea thrives in the future

Marine Spatial Planning: What is it?

Land use planning..... for the sea

Seabird breeding colonies



1. Scope and explore the area
2. Identify its values and map them
3. Draw the vision of what people want it to look like
4. Determine what areas are most appropriate for different activities to ensure the sea thrives in the future



Marine Spatial Planning: What is it?

Land use planning..... for the sea

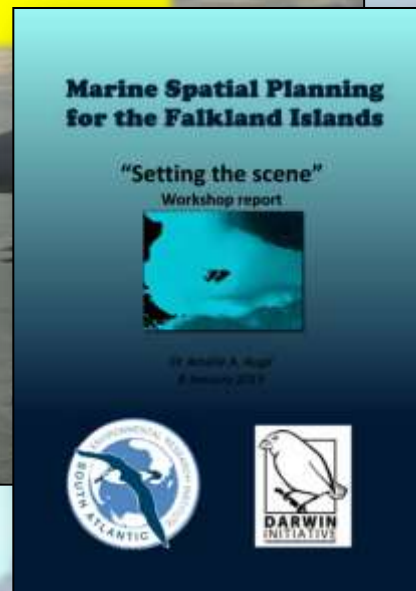


1. Scope and explore the area
2. Identify its values and map them
3. Draw the vision of what people want it to look like
4. Determine what areas are most appropriate for different activities to ensure the sea thrives in the future

Marine Spatial Planning: What is it?

Land use planning..... for the sea

“Well managed marine and coastal areas to support sustainable economic development whilst protecting our biodiversity and wild unspoilt areas, and supporting the safe use of the sea and celebration of our maritime heritage.”



1. Scope and explore the area
2. Identify its values and map them
3. Draw the vision of what people want it to look like
4. Determine what areas are most appropriate for different activities to ensure the sea thrives in the future



Marine Spatial Planning: What is it?

Land use planning..... for the sea



1. Scope and explore the area
2. Identify its values and map them
3. Draw the vision of what people want it to look like
4. **Determine what areas are most appropriate for different activities to ensure the sea thrives in the future**

Marine Spatial Planning: Why do we need it?



Marine activities, current, increasing and new



Marine Spatial Planning: Why do we need it?



All boat traffic



Marine Spatial Planning: Why do we need it?



Tanker routes





Many marine values to protect





Many marine values to protect





ECONOMIC

ENVIRONMENTAL

Many marine values to protect

CULTURAL



CULTURAL

Mapping cultural values related to the marine and coastal environments

- Survey as many members of the community as possible in person (interviews) or by mail (maps will be posted and phone calls to explain)

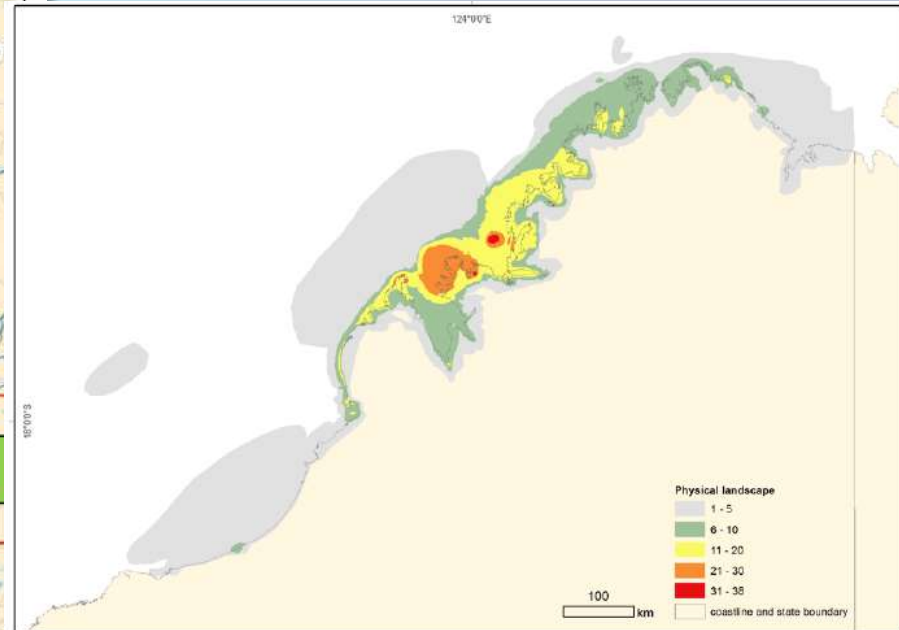
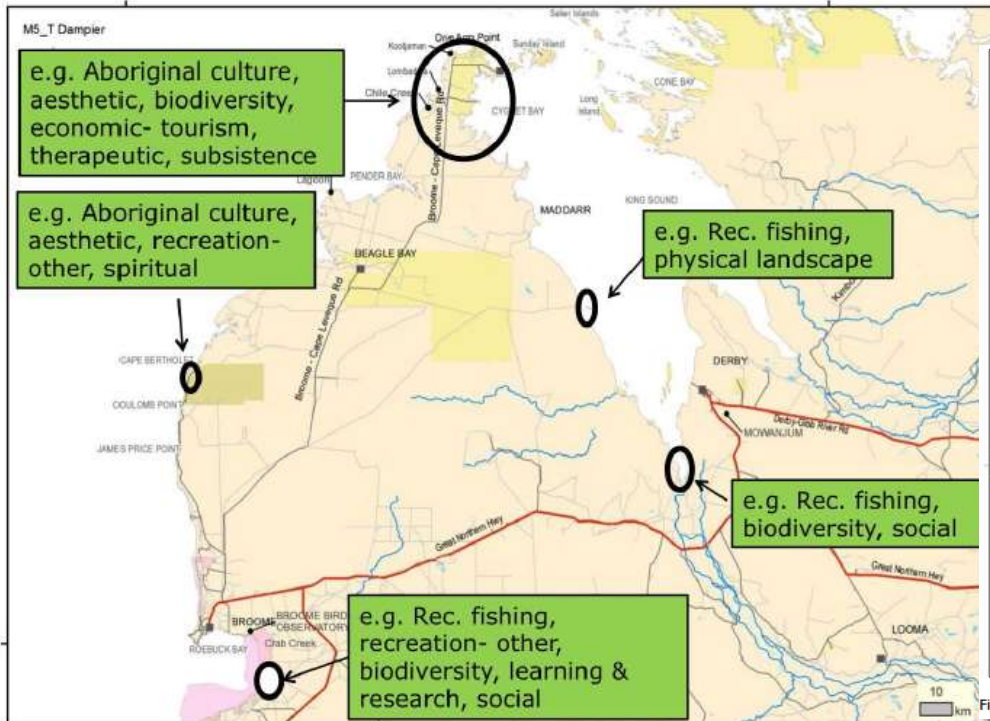


Figure 7. Frequencies for 'physical landscape' values

Figure 6 Example of allocating emergent values to digitised polygons

ENVIRONMENTAL

Mapping whale distribution around the Falkland Islands using available knowledge

- ✦ Reports of whale stranding and sightings
- ✦ Public survey



Thanks

