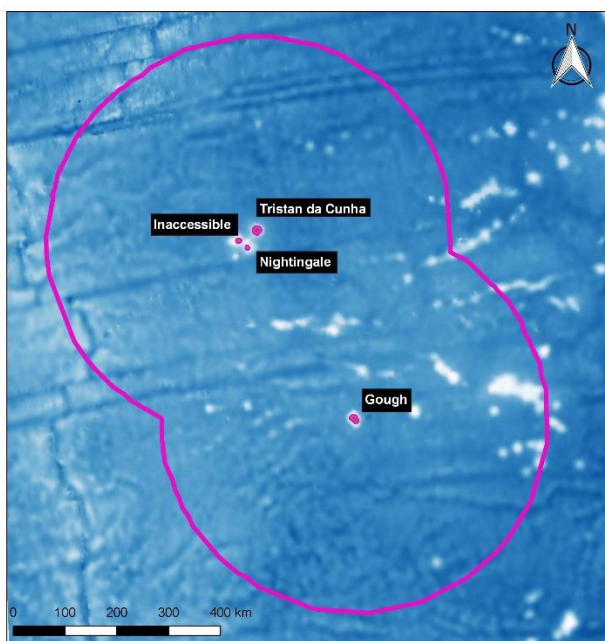
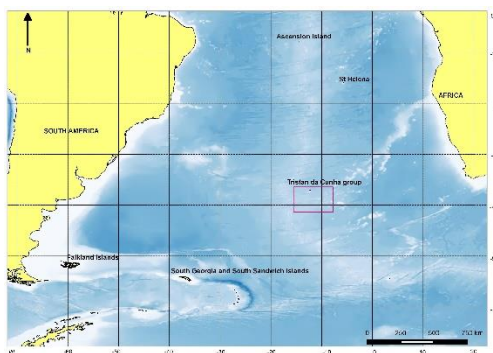


Mapping lobster biomass and the utilities/services on Tristan da Cunha. QGIS reaches the remotest inhabited island of the world!

By iLaria Marengo

First published 14th November 2016

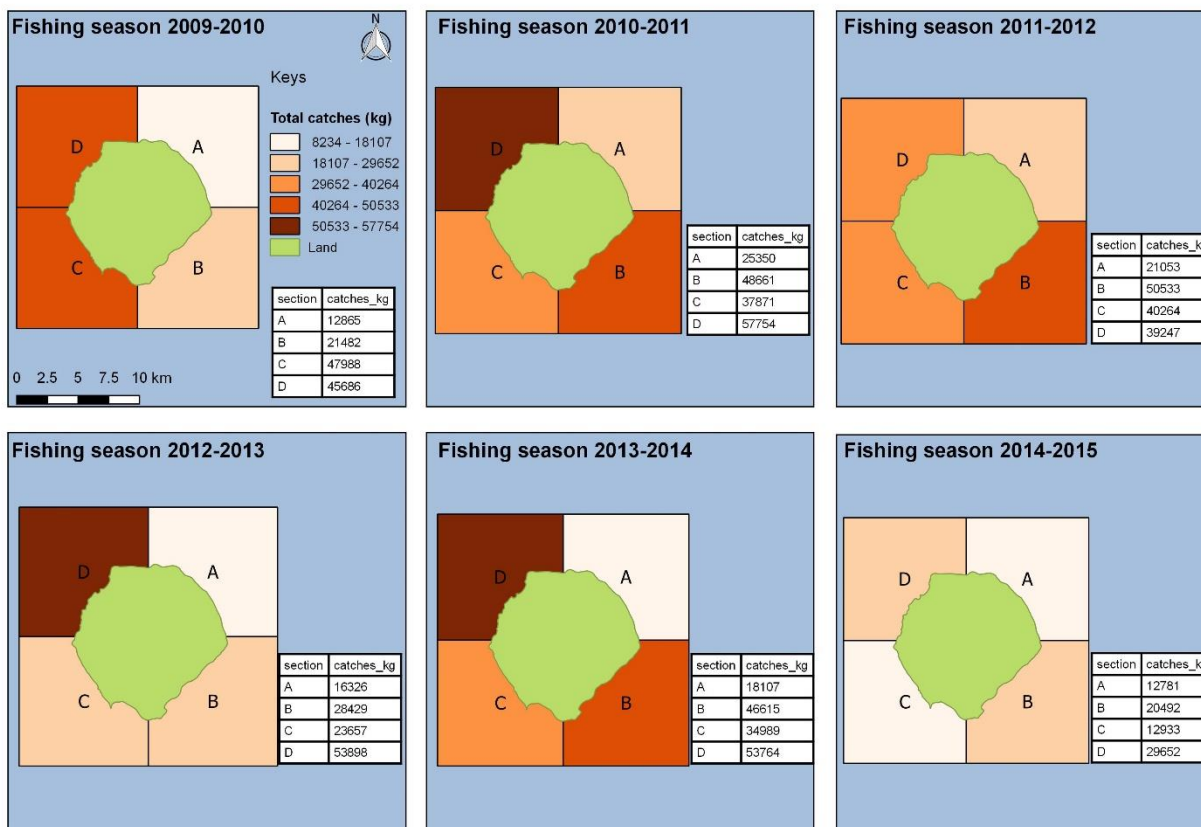
Working with GIS and as data manager is exciting, but it becomes even more when the job is taking you to unusual places such as Tristan da Cunha, a small volcanic island in the middle of the Southern Atlantic ocean surrounded only by other two smaller islands, Inaccessible and Nightingale and, further south, Gough.



SAERI NEWS

The project to realise an Information Management System and GIS centre for the South Atlantic UKOTs has reached its final destination and a proper conclusion after three years of life. Getting to Tristan is all but easy thus it took time to arrive, meet the small community and bring QGIS and a flavour of data management in such a remote place.

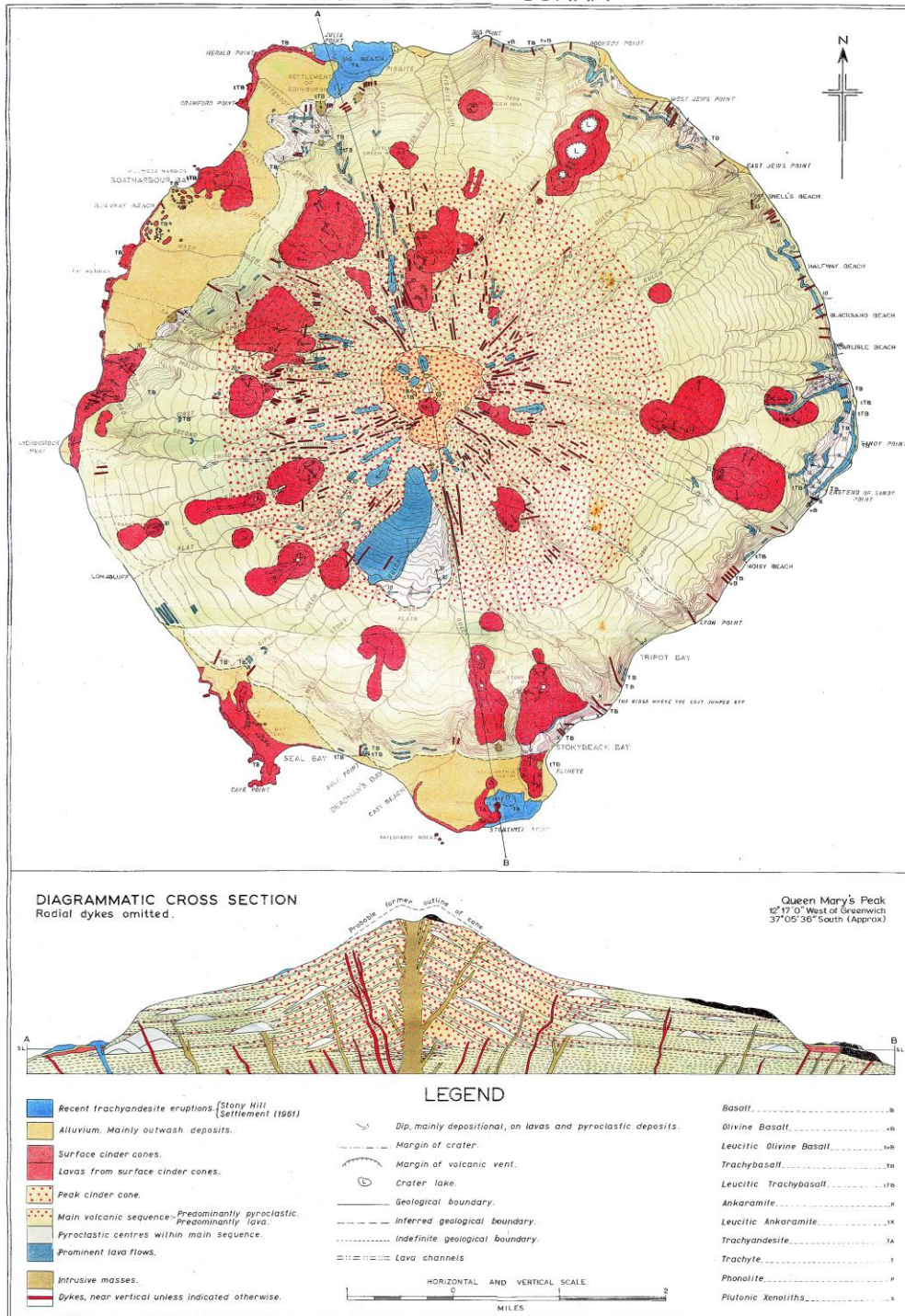
The QGIS course was not planned in advance but day by day once in Tristan. In fact it was thought that could be more effective to tailor the lessons according to the main needs and existent GIS skills of the users. The majority of the time was spent at the fisheries and electricity and plumbing departments. The directors showed a great interest in receiving a GIS course and their requirements were very specific. They ranged from being able to map lobster biomass per monitoring station, lobster catch (total and average per fishing season) and effort around Tristan, to the network of services, utilities and structures of the settlement of Edinburgh of the seven seas.



The coordinate system is: WGS84-UTM21S

Date: 16/09/2016

R.S. Expedition to Tristan da Cunha **GEOLOGICAL MAP OF TRISTAN DA CUNHA** *Phil. Trans. A*



Unfortunately on the island internet is very limited and not reliable. Among the whole South Atlantic UKOTs Tristan has the smallest band width, hence it is virtually impossible to download images or connect to google earth like

SAERI NEWS

everyone else would do in the other territories. In terms of GIS a poor internet is partly a limitation as getting new plugins, google maps or updates of the software becomes very difficult. The solution is to work with the long term release releases and get large data (such as imagery) saved as offline images and shipped in on DVDs.

In parallel to the GIS course, time was spent in harvesting metadata. The departments involved in the training course provided metadata about their data and RSPB kindly helped in gathering information on environmental data captured throughout the years with the help of the local conservation department. Almost 40 metadata records were collected and will be available on the [metadata catalogue](#) online from the end of November.

Finally, few hours were dedicated with officers of the tourist office and advice on QGIS mapping techniques was given to improve the current maps given to the tourists landing at Tristan. Using QGIS will make mapping much easier and quicker than what is now, entirely based on graphic design software.

The GIS course delivered in Tristan focussed on simple and basic tools that could help straightway the GIS users in achieving their requirements. Indeed, more can be done with GIS but the overall idea, after being on the island, is to let the GIS grow a step at a time according to people' needs.